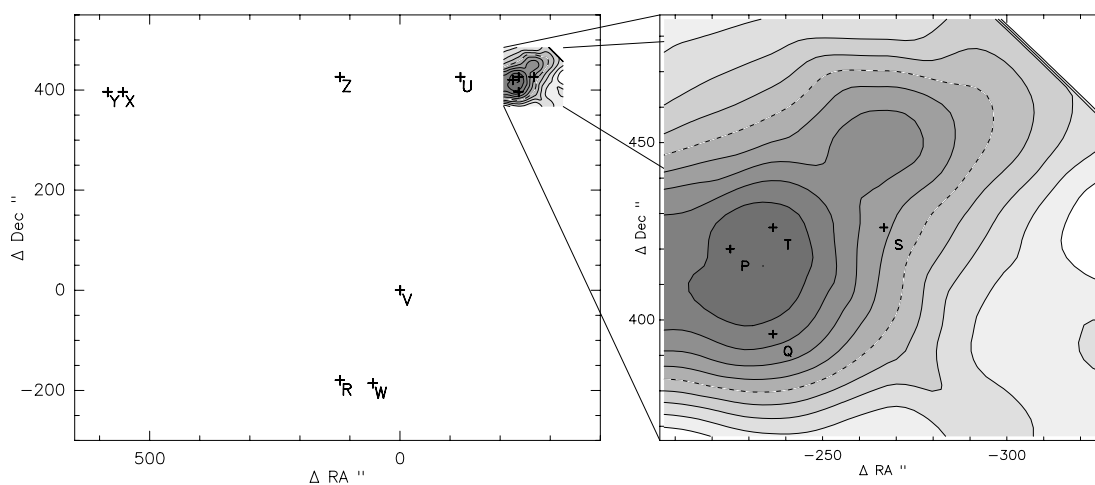


Appendix M

Edge Cloud 1 observations at the MPIfR 100m telescope Oct-Nov 2005

Figure M.1: ^{12}CO (1–0) map of EC1 showing observed positions P and R:
P. $\alpha_{1950} = 02:00:38.2$, $\delta = 63:00:20.0$, $v_{\text{rad}} = -102.80 \text{ km s}^{-1}$ (EC1PEAK1).
R. $\alpha_{1950} = 02:01:28.7$, $\delta = 62:50:20.0$, $v_{\text{rad}} = -101.20 \text{ km s}^{-1}$ (EC1PEAK2).



M: EC1 OBSERVATIONS AT THE MPIFR 100M TELESCOPE OCT-NOV 2005

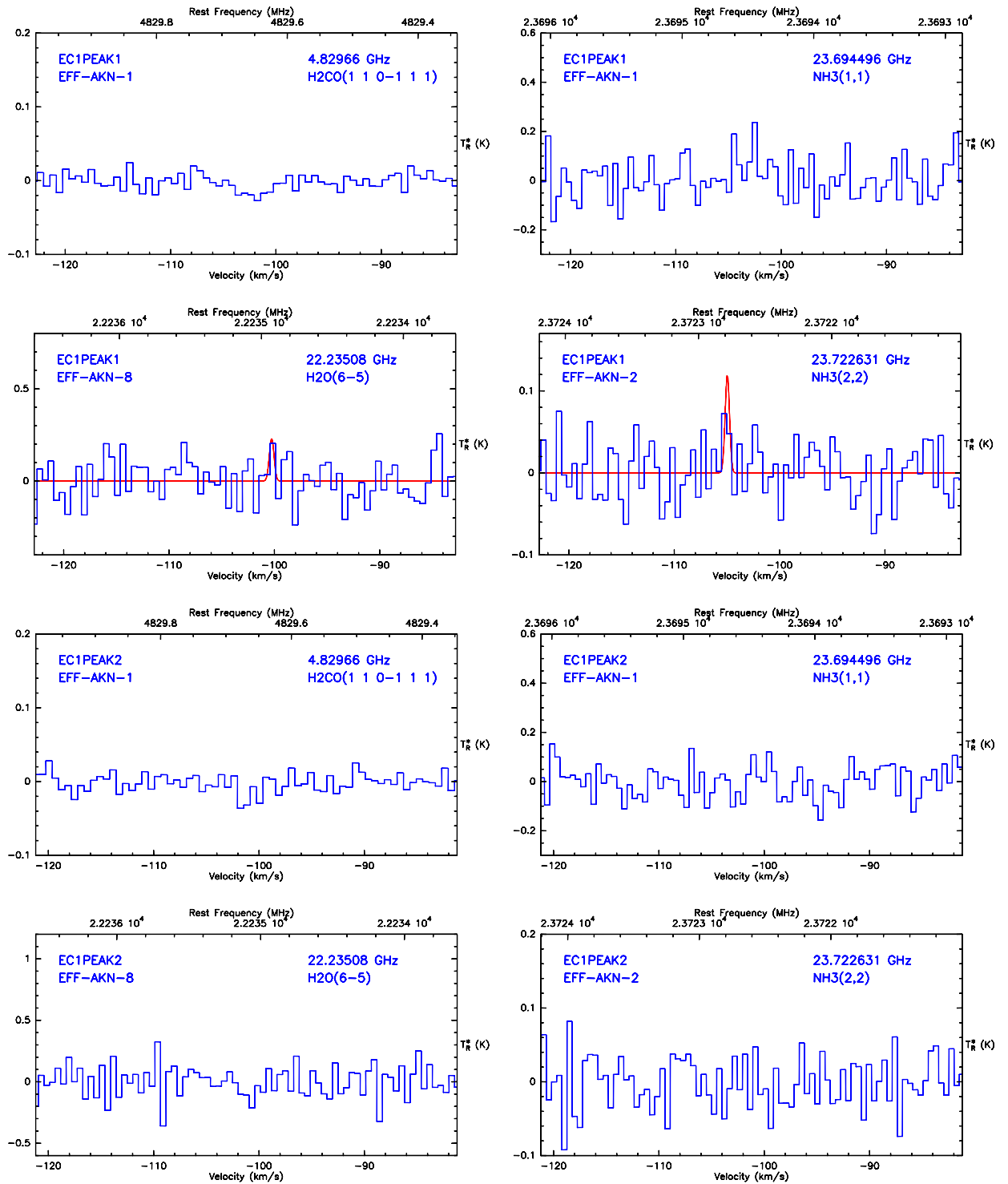


Figure M.2: EC1 positions P and R: H₂CO, NH₃ and H₂O spectra observed at the MPIFR Effelsberg 100m Oct-Nov 2005.

EC1PEAK1: $\alpha_{1950} = 02:00:38.2$, $\delta = 63:00:20.0$, $v_{\text{rad}} = -102.80 \text{ km s}^{-1}$.

EC1PEAK2: $\alpha_{1950} = 02:01:28.7$, $\delta = 62:50:20.0$, $v_{\text{rad}} = -101.20 \text{ km s}^{-1}$.

Table M.1: EC1 positions P and R: H₂CO, NH₃ and H₂O spectra observed at the MPIFR Effelsberg 100m Oct-Nov 2005.
Line spectra summary for Fig. M.2 (where ● = $I > 3\sigma$ and ○ = $I > 2\sigma$).

I	Source	Line	Trans.	Frequency (GHz)	Position (km s ⁻¹)	Width (km s ⁻¹)	Area (K km s ⁻¹)	T_R^* (K)	rms (K)	Resol. (km s ⁻¹)	Time (min)	UT	LST	T_{sys} (K)	Receiver
	EC1PEAK1	H ₂ CO	1 _{1,0} -1 _{1,1}	4.829660	—	—	—	—	0.010	0.606	292	01:09	03:58	56	AKN-1
	EC1PEAK1	NH ₃	1,1	23.694496	-102.80 ± 0.63	2.94 ± 1.20	0.33 ± 0.13	0.104	0.079	0.490	93	04:06	08:18	448	AKN-1
●	EC1PEAK1	NH ₃	2,2	23.722631	-104.96 ± 0.08	0.49 ± 7.59	0.06 ± 0.03	0.120	0.033	0.490	93	04:06	08:18	210	AKN-2
○	EC1PEAK1	H ₂ O	6-5	22.235080	-100.26 ± 0.18	0.53 ± 0.53	0.13 ± 0.07	0.231	0.107	0.527	25	21:38	01:32	171	AKN-8
	EC1PEAK2	H ₂ CO	1 _{1,0} -1 _{1,1}	4.829660	—	—	—	—	0.010	0.606	202	06:01	08:51	57	AKN-1
	EC1PEAK2	NH ₃	1,1	23.694496	—	—	—	—	0.067	0.490	102	08:21	12:33	355	AKN-1
	EC1PEAK2	NH ₃	2,2	23.722631	—	—	—	—	0.034	0.490	93	07:03	11:15	209	AKN-2
	EC1PEAK2	H ₂ O	6-5	22.235080	—	—	—	—	0.150	0.527	21	21:44	01:38	171	AKN-8

